



# the flexible XL

## for aorta & veins



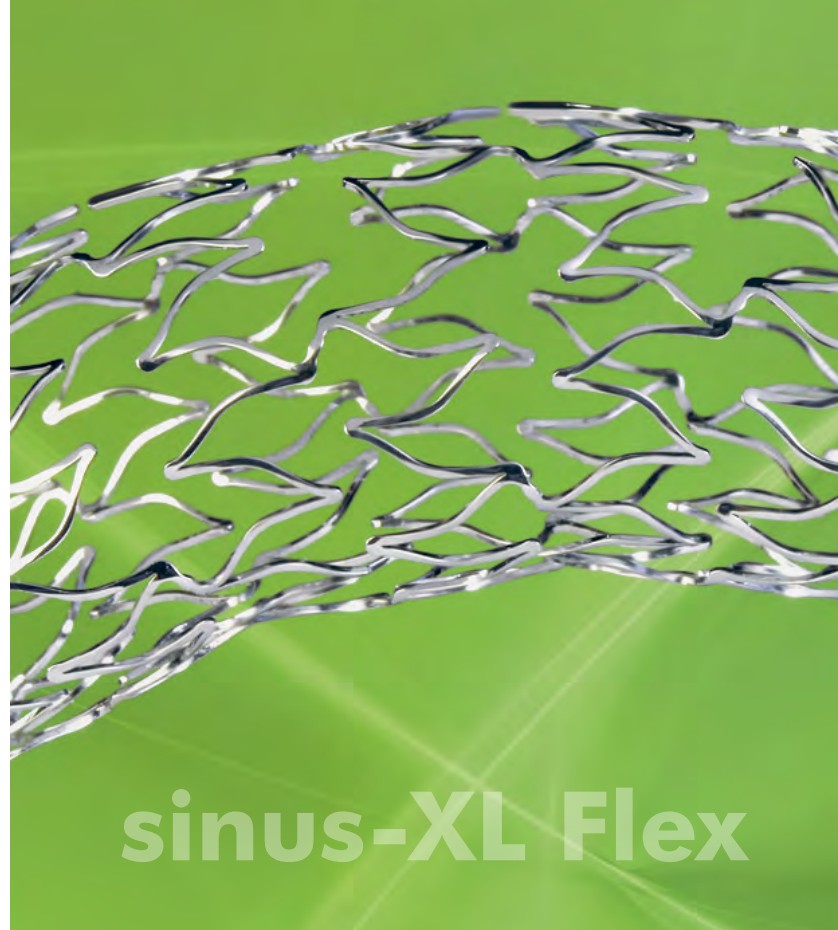
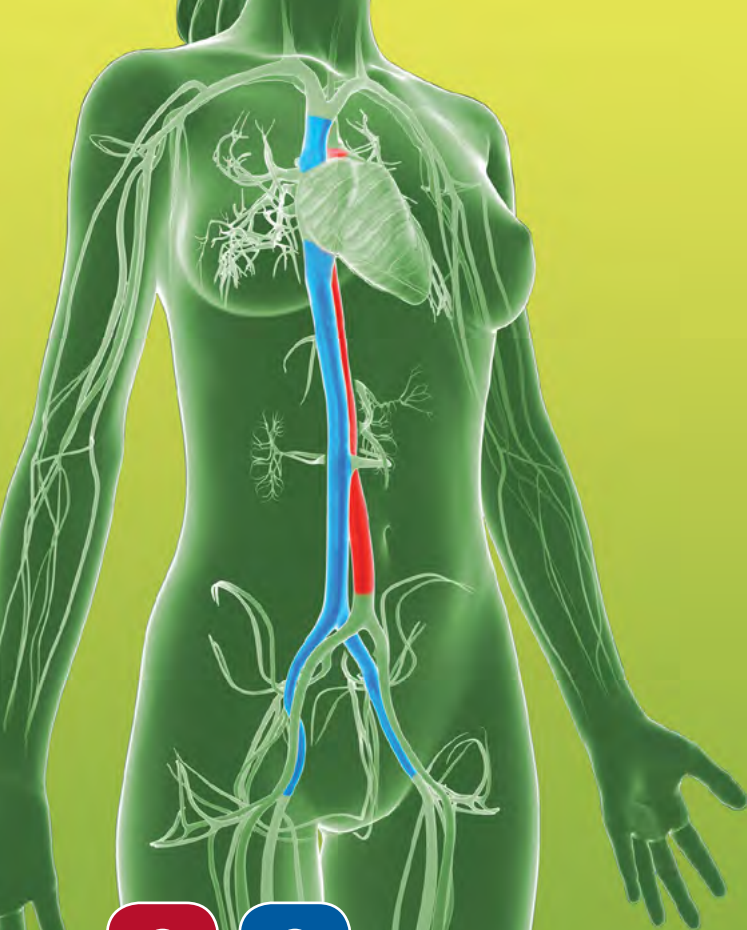
## sinus-

# XL Flex

the flexible nitinol stent with  
diameters up to  $\varnothing$  24 mm  
dedicated for aorta and veins

# XL Flex





sinus-XL Flex



the flexible XL for aortic and venous interventions

### INDIKATIONEN

- Stenosen und Dissektionen der Aorta
- Vena Cava-Syndrom
- Endoleak Typ 1a und 1b
- Aortenisthmusstenosen
- Symptomatische Obstruktionen der iliofemorale Venen

### INDICATIONS

- Sténoses et dissections aortiques
- Syndrome cave
- Endofuites type 1a et 1b
- Coarctations aortiques
- Obstructions symptomatiques des veines iliofemorales

### INDICATIONS

- Aortic stenoses and dissections
- Vena cava compression syndrome
- Endoleak type 1a and 1b
- Aortic coarctations
- Symptomatic obstructions of the iliofemoral veins

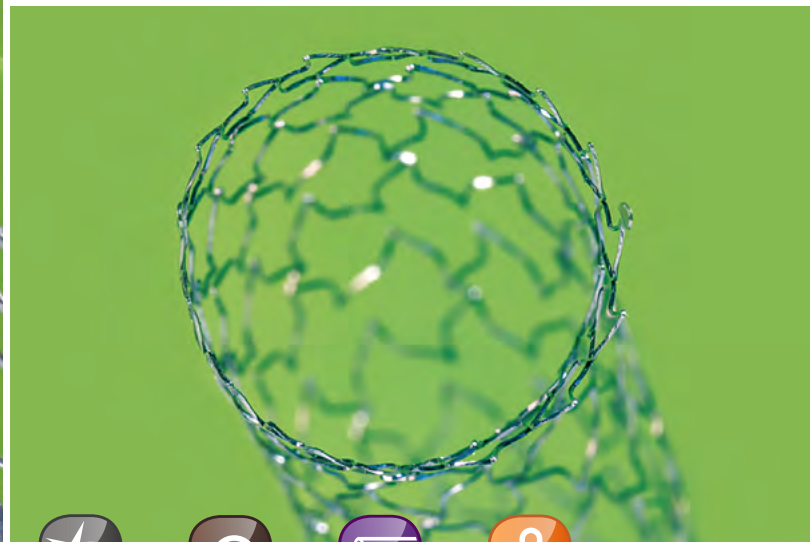
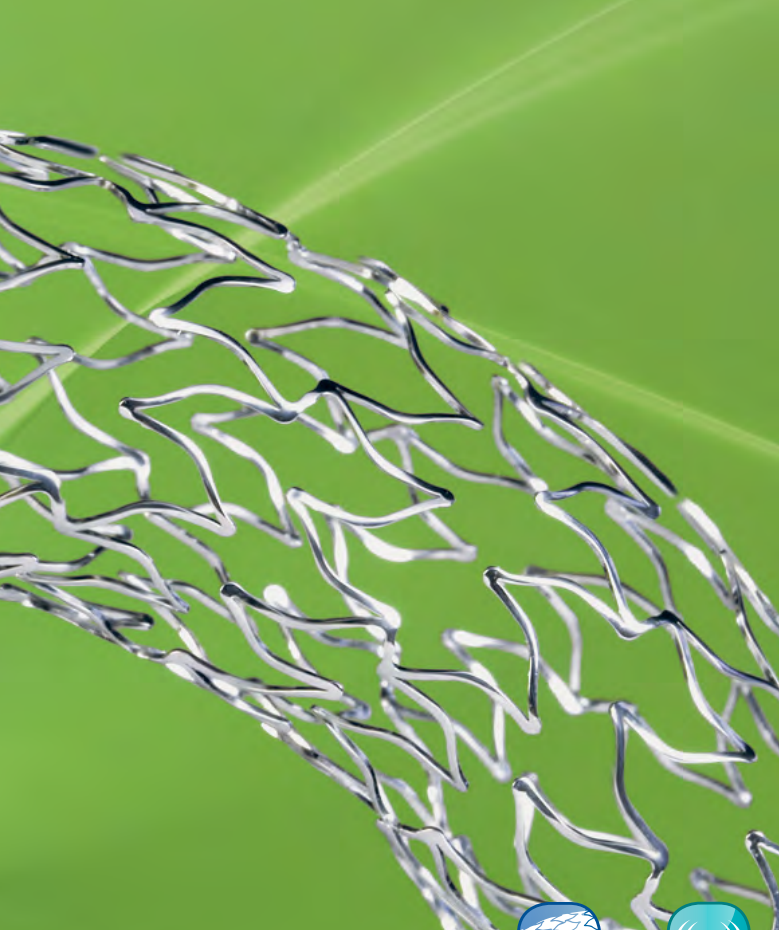
#### crush resistance

using parallel plates N/cm · stent diameter: 14 mm

0,0	0,25	0,5	0,75	1,0
<b>sinus-XL Flex</b>				
Competitor A				
Competitor B				







open-cell design



radiopaque markers



electro-polishing



anti-jump technique



braided sheath



atraumatic soft-tip

## 🇩🇪 BESONDERHEITEN

- Überragende Radialkraft vergleichbar mit Closed-Cell Nitinol Stents
- Superflexibles Open-Cell Design für eine sehr gute Adaption an das Gefäß, sogar im Aortenbogen
- Anti-Jump Technique™ zur Vermeidung von Stentmigration während des Freisetzens
- 10F Applikationsbesteck adaptiert auf 0.035 inch Führungsdraht bei allen Stentdurchmessern und Längen

## 🇫🇷 CARACTERISTIQUES

- Force radiale élevée comparable aux stents auto-expansibles en nitinol à mailles fermées
- Très grande flexibilité grâce au design Mailles Ouvertes conçu pour s'adapter à la crosse aortique
- Anti-Jump Technique™ pour éviter la migration du stent pendant le déploiement
- Système d'application de 10F, adapté au fil-guide 0.035 inch pour toutes les longueurs et tous les diamètres des stents

## 🇬🇧 FEATURES

- Outstanding radial force comparable to closed-cell nitinol stents
- Superflexible open-cell design for a very good vessel adaptation even in the aortic arch
- Anti-Jump Technique™ to avoid stent migration during the stent deployment
- 10F application device adapted to 0.035i guide wire for all stent diameters and lengths

large diameters  
up to Ø 24 mm

14

16

18

20

22




24

Stent diameter mm	Stent length mm	Order Code
14	40	7414-01-8040
	60	7414-01-8060
	80	7414-01-8080
	100	7414-01-8100
	120	7414-01-8120
	150	7414-01-8150
16	40	7416-01-8040
	60	7416-01-8060
	80	7416-01-8080
	100	7416-01-8100
	120	7416-01-8120
	150	7416-01-8150
18	40	7418-01-8040
	60	7418-01-8060
	80	7418-01-8080
	100	7418-01-8100
	120	7418-01-8120
	160	7418-01-8160




Stent diameter mm	Stent length mm	Order Code
20	40	7420-01-8040
	60	7420-01-8060
	80	7420-01-8080
	100	7420-01-8100
	120	7420-01-8120
	150	7420-01-8150
22	50	7422-01-8050
	60	7422-01-8060
	80	7422-01-8080
	100	7422-01-8100
	120	7422-01-8120
	150	7422-01-8150
24	40	7424-01-8040
	60	7424-01-8060
	80	7424-01-8080
	100	7424-01-8100
	120	7424-01-8120
	160	7424-01-8160



10F application device adapted to 0.035 inch guide wire

-  · 10F / 100 cm Applikationsbesteck  
 · adaptiert auf 0.035 inch Führungsdraht  
 · Verpackungseinheit: 1 Stück
-  · 10F / 100 cm système de pose  
 · adapté au fil-guide de 0.035 inch  
 · conditionnement : 1 unité
-  · 10F / 100 cm application device  
 · adapted to 0.035 inch guide wire  
 · box: 1 unit

the flexible XL stent for aorta and veins

-  Diese Informationen ersetzen nicht die Gebrauchsanweisung - Informationen nur für medizinische Fachkreise
-  Ces informations ne remplacent pas le mode d'emploi - Informations destinées uniquement aux membres des professions médicales
-  This information does not replace the instructions for use - Information for medical experts only