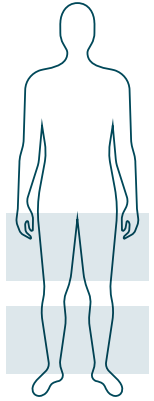
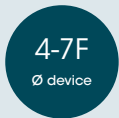


NyloTrack +

SEMI-COMPLIANT PTA-BALLOONS



arterial



4-7F
Ø device



0.014i
guide
wire



0.018i
guide
wire



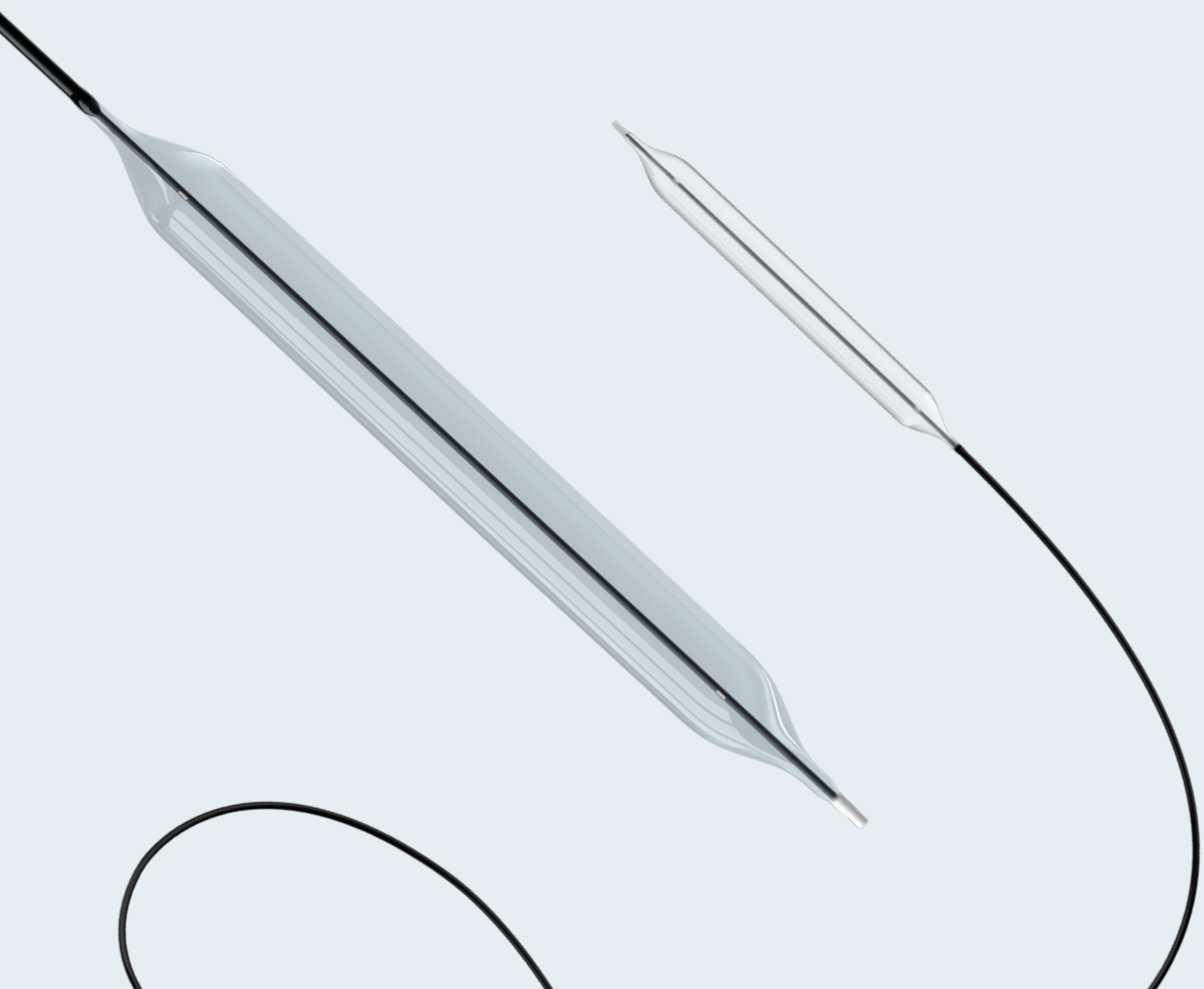
0.035i
guide
wire



Radiopaque
markers



atraumatic
soft tip



NyloTrack +

PERFORMANCE AND VERSATILITY WITHIN REACH

FEATURES

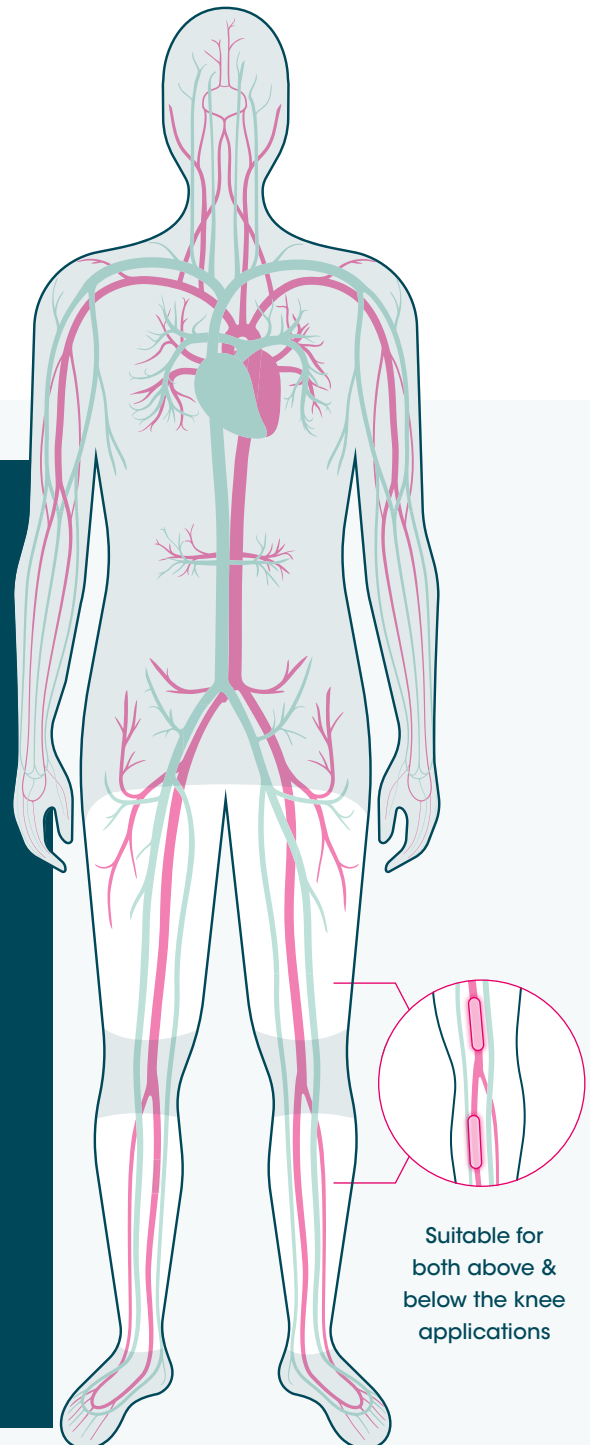
OTW, dual & Coaxial Lumen
Shaft configuration options

Optimised folding process
for low balloon profile

Hydrophilic coating for
enhanced trackability

Excellent pushability to navigate
through tortuous vasculature*

Slender tapered and atraumatic
tip design for higher flexibility

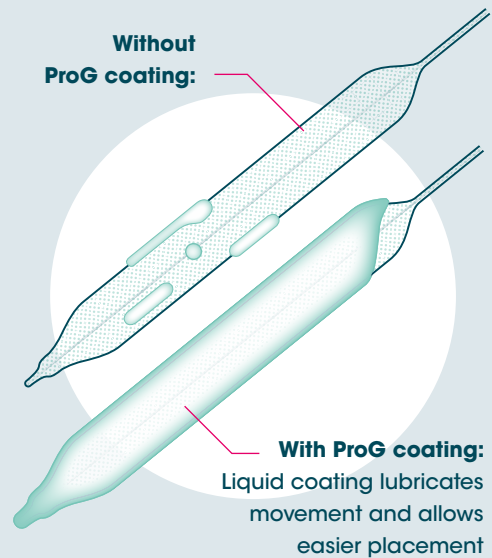


Suitable for
both above &
below the knee
applications

*Internal testing

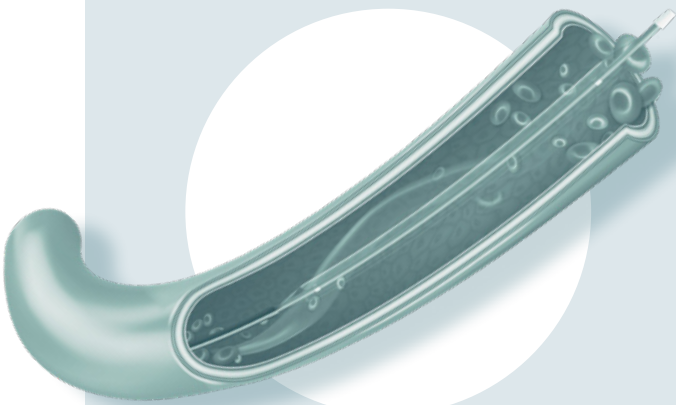
HYDROPHILIC COATING

The innovative hydrophilic ProG[®] coating provides excellent trackability through hard calcified stenoses and occlusions, and enables optimal balloon placement in the lesion site for better control and effectiveness in the treatment of challenging stenoses.



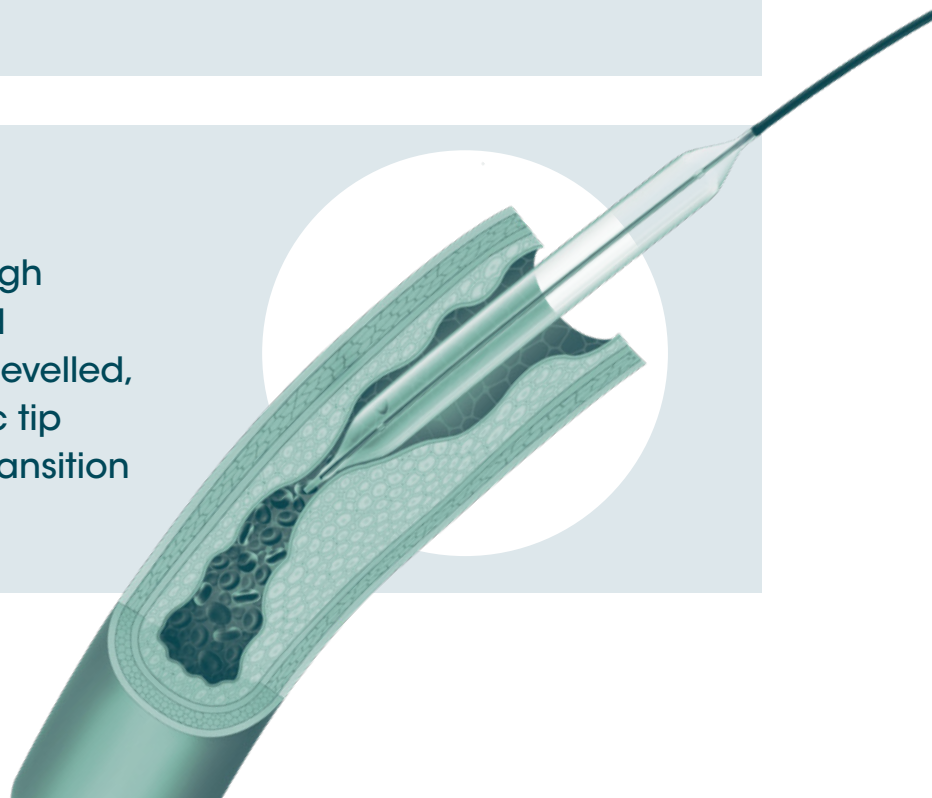
CROSSABILITY

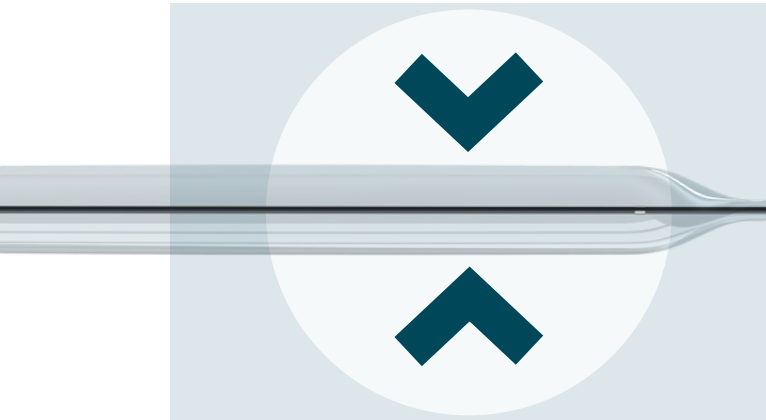
ProG[®] coating provides less friction when passing through narrow vessels and optimises manoeuvring through tortuous anatomies



PUSHABILITY

Effective passage through hardened stenoses and occlusions due to the bevelled, conical and atraumatic tip design - with optimal transition from guide wire to tip.





LOW PROFILE DESIGN

Thanks to the optimised folding process, the balloon has a low balloon profile.

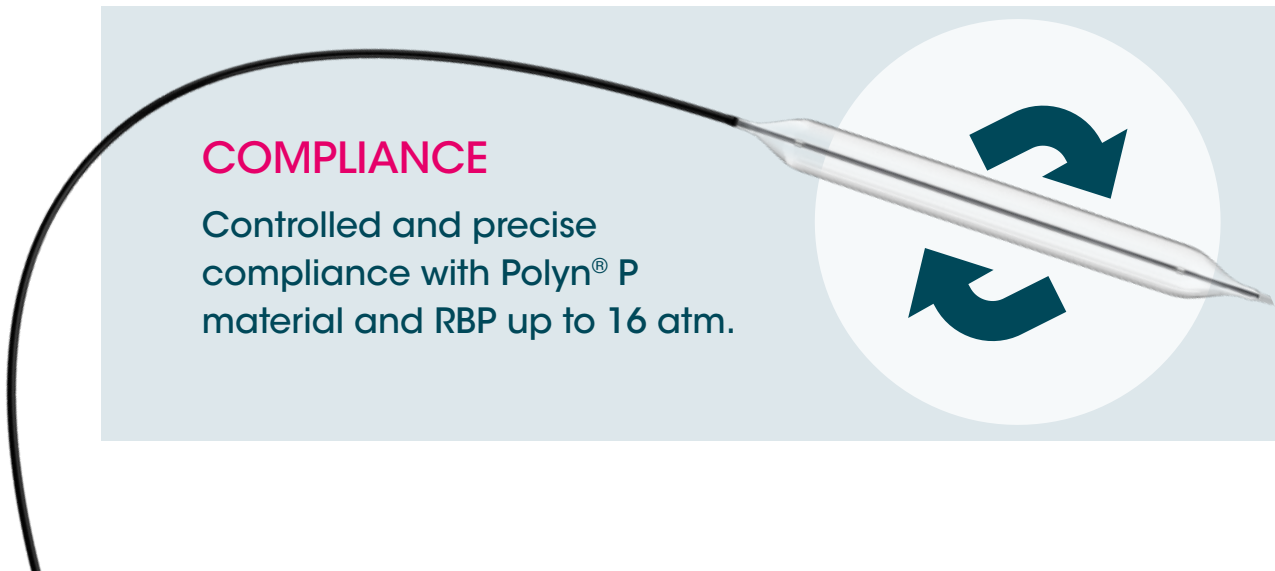
PERFECT VISUALISATION

Integrated, radiopaque markers made of 90% Pt / 10% Ir for precise placement.



EFFICIENT POSITIONING

Coaxial lumen catheter for short deflation times.

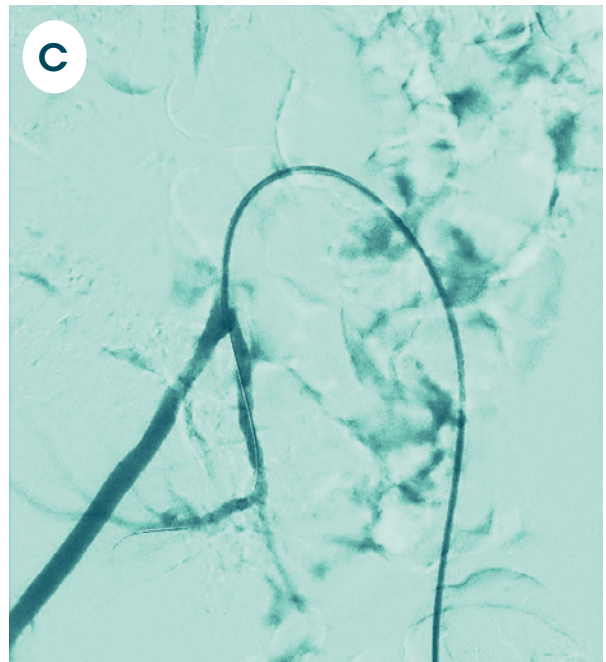
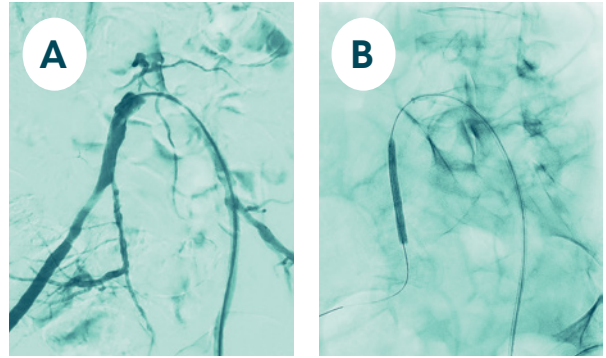


COMPLIANCE

Controlled and precise compliance with Polyn[®] P material and RBP up to 16 atm.

INDICATIONS:

NyloTrack+ is indicated for the dilatation of stenoses in iliac, femoral, ilio-femoral, popliteal, infrapopliteal arteries, below the knee vessels and for the treatment of obstructive lesions of native or synthetic arteriovenous dialysis fistulas.



IN USE:*

- (A) 40 mm long occlusion of the internal iliac artery in patients with intermittent claudication.
- (B) Balloon dilatation with NyloTrack+ 18
- (C) After successful recanalisation and balloon dilatation.

*Internal testing

WIDE RANGE OF SIZES

0.014i

Balloon length up to 200 mm and diameter up to 4 mm

120 and 150 cm shaft lengths

0.018i

Balloon length up to 200 mm and diameter up to 7 mm

120 and 150 cm shaft lengths

0.035i

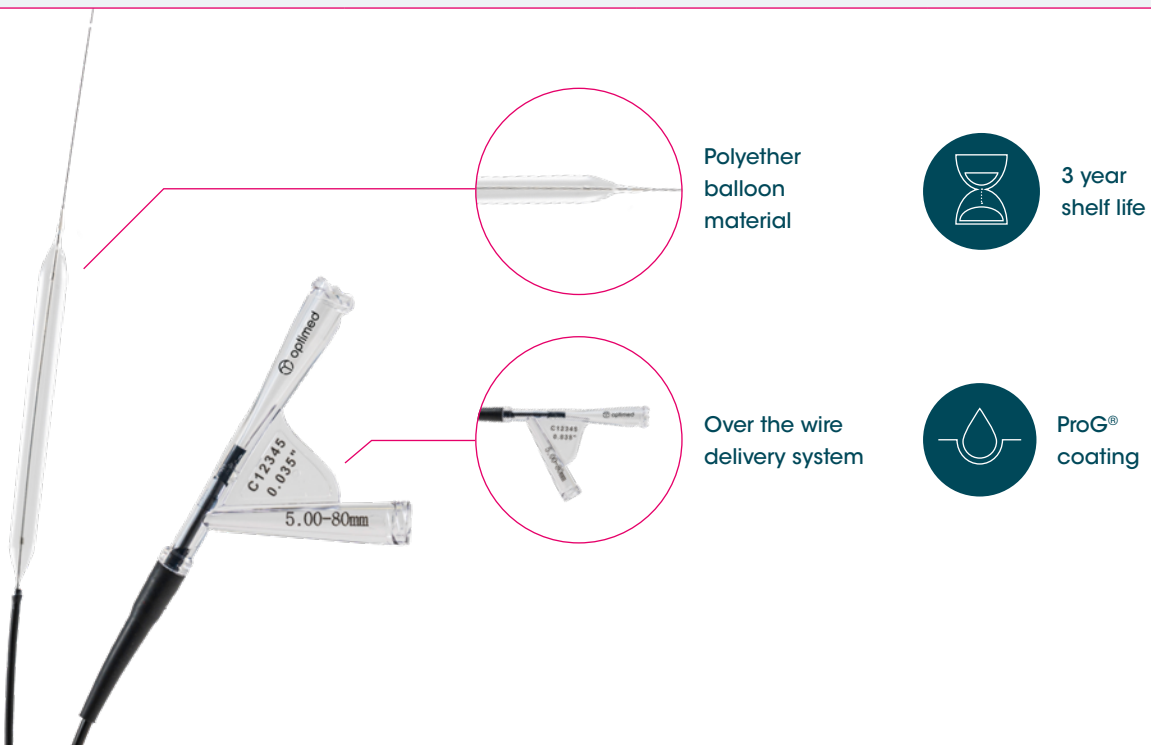
Balloon length up to 200 mm and diameter up to 12 mm

80,130 and 150 cm shaft lengths



TECHNICAL DATA – BALLOON CATHETER

Technical Specifications	0.014" OTW	0.018" OTW	0.035" OTW
Balloon diameter	1.5 – 4.0mm	2.0 – 7.0mm	3.0 – 12.0mm
Balloon length	20 – 200mm	40 – 200mm	20 – 200mm
Balloon folds	1.5mm: 2 wings 2.0 – 4.0mm: 3 wings	2.0 – 4.0mm: 3 wings 5.0 – 7.0mm: 6 wings	3.0 – 4.0mm: 3 wings 5.0 – 12.0mm: 6 wings
Balloon lumen shaft	Coaxial lumen	Coaxial lumen	Two lumen
Usable shaft length	120cm, 150cm	120cm, 150cm	80cm, 130cm, 150cm
Tip entry profile	≤ 0.60mm	≤ 0.60mm	≤ 1.10mm
Guide wire compatibility	0.014"	0.018"	0.035"
Guiding catheter compatibility	5F	5F – 7F	7F – 9F
Nominal pressure*	6 – 8 atm	6 – 8 atm	5 – 8 atm
Rated burst pressure	12 – 16 atm	12 – 14 atm	10 – 14 atm
Average burst pressure	16 – 20 atm	16 – 20 atm	14 – 18 atm
Balloon material	Polyether block amide	Polyether block amide	Polyether block amide



COMPLIANCE CHARTS

NOMINAL/RATED BURST PRESSURES (NP/RBP)

NYLOTRACK + 14 (GUIDE WIRE 0.014i)

Introducer Sheath	Guiding Catheter	Balloon ø (mm)	Balloon length (mm)							
			20	40	60	80	100	120	150	200
4F	5F	1.5	8/16							
		2		8/14	8/14	8/14	6/14	6/14	6/14	6/14
		2.5		8/14	8/14	8/14	6/12	6/12	6/12	6/12
		3		8/14	8/14	8/14	6/12	6/12	6/12	6/12
		3.5		8/14	8/14	8/14	6/12	6/12	6/12	6/12
		4		8/14	8/14	8/14	6/12	6/12	6/12	6/12

NYLOTRACK + 18 (GUIDE WIRE 0.018i)

Introducer Sheath	Guiding Catheter	Balloon ø (mm)	Balloon length (mm)						
			40	60	80	100	120	150	200
4F	5F	2	8/14	8/14	8/14	6/14	6/14	6/14	6/14
		2.5	8/14	8/14	8/14	6/12	6/12	6/12	6/12
		3	8/14	8/14	8/14	6/12	6/12	6/12	6/12
		3.5	8/14	8/14	8/14	6/12	6/12	6/12	6/12
		4	8/14	8/14	8/14	6/12	6/12	6/12	6/12
5F	6F	5	8/14	8/14	8/14	6/12	6/12	6/12	6/12
		5.5	8/14	8/14	8/14	6/12	6/12	6/12	6/12
	7F	6	8/14	8/14	8/14	6/12	6/12	6/12	6/12
		7	8/13						

NYLOTRACK + 35 (GUIDE WIRE 0.035i)

Introducer Sheath	Guiding Catheter	Balloon ø (mm)	Balloon length (mm)							
			20	40	60	80	100	120	150	200
5F	7F	3	8/14	8/14	8/14	8/14				
		4	8/14	8/14	8/14	8/14	6/12	6/12	6/12	6/12
		5	8/14	8/14	8/14	8/14	6/12	6/12	6/12	6/12
		6	8/14	8/14	8/14	8/14	6/12	6/12	6/12	6/12
		7	8/13	8/13	8/13	8/13	6/10	6/10	6/10	6/10
6F	8F	8	8/12	8/12	8/12	8/12	5/10	5/10	5/10	5/10
		9	8/12	8/12	8/12	8/12				
7F	9F	10	6/10	6/10	6/10	6/10				
		12	6/10	6/10	6/10	6/10				

ORDER OVERVIEW: NYLOTRACK + 14

CATHETER LENGTH 120 CM

Introducer Sheath	NP (atm)	RBP (atm)	Balloon ø (mm)	Balloon length (mm)			
				20	40	60	80
4F	8	16	1.5	OP-PD051_50-20S			
	8	14	2		OP-PD052_00-40S	OP-PD052_00-60S	OP-PD052_00-80S
	8	14	2.5		OP-PD052_50-40S	OP-PD052_50-60S	OP-PD052_50-80S
	8	14	3		OP-PD053_00-40S	OP-PD053_00-60S	OP-PD053_00-80S
	8	14	3.5		OP-PD053_50-40S	OP-PD053_50-60S	OP-PD053_50-80S
	8	14	4		OP-PD054_00-40S	OP-PD054_00-60S	OP-PD054_00-80S

Introducer Sheath	NP (atm)	RBP (atm)	Balloon ø (mm)	Balloon length (mm)			
				100	120	150	200
4F	6	14	2	OP-PD052_00-100S	OP-PD052_00-120S	OP-PD052_00-150S	OP-PD052_00-200S
	6	12	2.5	OP-PD052_50-100S	OP-PD052_50-120S	OP-PD052_50-150S	OP-PD052_50-200S
	6	12	3	OP-PD053_00-100S	OP-PD053_00-120S	OP-PD053_00-150S	OP-PD053_00-200S
	6	12	3.5	OP-PD053_50-100S	OP-PD053_50-120S	OP-PD053_50-150S	OP-PD053_50-200S
	6	12	4	OP-PD054_00-100S	OP-PD054_00-120S	OP-PD054_00-150S	OP-PD054_00-200S

CATHETER LENGTH 150 CM

Introducer Sheath	NP (atm)	RBP (atm)	Balloon ø (mm)	Balloon length (mm)			
				20	40	60	80
4F	8	16	1.5	OP-PC051_50-20S			
	8	14	2		OP-PC052_00-40S	OP-PC052_00-60S	OP-PC052_00-80S
	8	14	2.5		OP-PC052_50-40S	OP-PC052_50-60S	OP-PC052_50-80S
	8	14	3		OP-PC053_00-40S	OP-PC053_00-60S	OP-PC053_00-80S
	8	14	3.5		OP-PC053_50-40S	OP-PC053_50-60S	OP-PC053_50-80S
	8	14	4		OP-PC054_00-40S	OP-PC054_00-60S	OP-PC054_00-80S

Introducer Sheath	NP (atm)	RBP (atm)	Balloon ø (mm)	Balloon length (mm)			
				100	120	150	200
4F	6	14	2	OP-PC052_00-100S	OP-PC052_00-120S	OP-PC052_00-150S	OP-PC052_00-200S
	6	12	2.5	OP-PC052_50-100S	OP-PC052_50-120S	OP-PC052_50-150S	OP-PC052_50-200S
	6	12	3	OP-PC053_00-100S	OP-PC053_00-120S	OP-PC053_00-150S	OP-PC053_00-200S
	6	12	3.5	OP-PC053_50-100S	OP-PC053_50-120S	OP-PC053_50-150S	OP-PC053_50-200S
	6	12	4	OP-PC054_00-100S	OP-PC054_00-120S	OP-PC054_00-150S	OP-PC054_00-200S

ORDER OVERVIEW: NYLOTRACK + 18

CATHETER LENGTH 120 CM

Introducer Sheath	NP (atm)	RBP (atm)	Balloon ø (mm)	Balloon length (mm)		
				40	60	80
4F	8	14	2	OP-PD062_00-40S	OP-PD062_00-60S	OP-PD062_00-80S
	8	14	2.5	OP-PD062_50-40S	OP-PD062_50-60S	OP-PD062_50-80S
	8	14	3	OP-PD063_00-40S	OP-PD063_00-60S	OP-PD063_00-80S
	8	14	3.5	OP-PD063_50-40S	OP-PD063_50-60S	OP-PD063_50-80S
	8	14	4	OP-PD064_00-40S	OP-PD064_00-60S	OP-PD064_00-80S
5F	8	14	5	OP-PD065_00-40S	OP-PD065_00-60S	OP-PD065_00-80S
	8	14	5.5	OP-PD065_50-40S	OP-PD065_50-60S	OP-PD065_50-80S
	8	14	6	OP-PD066_00-40S	OP-PD066_00-60S	OP-PD066_00-80S
	8	13	7	OP-PD067_00-40S		

Introducer Sheath	NP (atm)	RBP (atm)	Balloon ø (mm)	Balloon length (mm)			
				100	120	150	200
4F	6	14	2	OP-PD062_00-100S	OP-PD062_00-120S	OP-PD062_00-150S	OP-PD062_00-200S
	6	12	2.5	OP-PD062_50-100S	OP-PD062_50-120S	OP-PD062_50-150S	OP-PD062_50-200S
	6	12	3	OP-PD063_00-100S	OP-PD063_00-120S	OP-PD063_00-150S	OP-PD063_00-200S
	6	12	3.5	OP-PD063_50-100S	OP-PD063_50-120S	OP-PD063_50-150S	OP-PD063_50-200S
	6	12	4	OP-PD064_00-100S	OP-PD064_00-120S	OP-PD064_00-150S	OP-PD064_00-200S
5F	6	12	5	OP-PD065_00-100S	OP-PD065_00-120S	OP-PD065_00-150S	OP-PD065_00-200S
	6	12	5.5	OP-PD065_50-100S	OP-PD065_50-120S	OP-PD065_50-150S	OP-PD065_50-200S
	6	12	6	OP-PD066_00-100S	OP-PD066_00-120S	OP-PD066_00-150S	OP-PD066_00-200S

CATHETER LENGTH 150 CM

Introducer Sheath	NP (atm)	RBP (atm)	Balloon ø (mm)	Balloon length (mm)		
				40	60	80
4F	8	14	2	OP-PC062_00-40S	OP-PC062_00-60S	OP-PC062_00-80S
	8	14	2.5	OP-PC062_50-40S	OP-PC062_50-60S	OP-PC062_50-80S
	8	14	3	OP-PC063_00-40S	OP-PC063_00-60S	OP-PC063_00-80S
	8	14	3.5	OP-PC063_50-40S	OP-PC063_50-60S	OP-PC063_50-80S
	8	14	4	OP-PC064_00-40S	OP-PC064_00-60S	OP-PC064_00-80S
5F	8	14	5	OP-PC065_00-40S	OP-PC065_00-60S	OP-PC065_00-80S
	8	14	5.5	OP-PC065_50-40S	OP-PC065_50-60S	OP-PC065_50-80S
	8	14	6	OP-PC066_00-40S	OP-PC066_00-60S	OP-PC066_00-80S
	8	13	7	OP-PC067_00-40S		

Introducer Sheath	NP (atm)	RBP (atm)	Balloon ø (mm)	Balloon length (mm)			
				100	120	150	200
4F	6	14	2	OP-PC062_00-100S	OP-PC062_00-120S	OP-PC062_00-150S	OP-PC062_00-200S
	6	12	2.5	OP-PC062_50-100S	OP-PC062_50-120S	OP-PC062_50-150S	OP-PC062_50-200S
	6	12	3	OP-PC063_00-100S	OP-PC063_00-120S	OP-PC063_00-150S	OP-PC063_00-200S
	6	12	3.5	OP-PC063_50-100S	OP-PC063_50-120S	OP-PC063_50-150S	OP-PC063_50-200S
	6	12	4	OP-PC064_00-100S	OP-PC064_00-120S	OP-PC064_00-150S	OP-PC064_00-200S
5F	6	12	5	OP-PC065_00-100S	OP-PC065_00-120S	OP-PC065_00-150S	OP-PC065_00-200S
	6	12	5.5	OP-PC065_50-100S	OP-PC065_50-120S	OP-PC065_50-150S	OP-PC065_50-200S
	6	12	6	OP-PC066_00-100S	OP-PC066_00-120S	OP-PC066_00-150S	OP-PC066_00-200S

ORDER OVERVIEW: NYLOTRACK + 35

CATHETER LENGTH 80 CM

Introducer Sheath	NP (atm)	RBP (atm)	Balloon ø (mm)	Balloon length (mm)			
				20	40	60	80
5F	8	14	3	OP-PA033_00-20S	OP-PA033_00-40S	OP-PA033_00-60S	OP-PA033_00-80S
	8	14	4	OP-PA034_00-20S	OP-PA034_00-40S	OP-PA034_00-60S	OP-PA034_00-80S
	8	14	5	OP-PA035_00-20S	OP-PA035_00-40S	OP-PA035_00-60S	OP-PA035_00-80S
	8	14	6	OP-PA036_00-20S	OP-PA036_00-40S	OP-PA036_00-60S	OP-PA036_00-80S
	8	13	7	OP-PA037_00-20S	OP-PA037_00-40S	OP-PA037_00-60S	OP-PA037_00-80S
6F	8	12	8	OP-PA038_00-20S	OP-PA038_00-40S	OP-PA038_00-60S	OP-PA038_00-80S
	8	12	9	OP-PA039_00-20S	OP-PA039_00-40S	OP-PA039_00-60S	OP-PA039_00-80S
7F	6	10	10	OP-PA0310_00-20S	OP-PA0310_00-40S	OP-PA0310_00-60S	OP-PA0310_00-80S
	6	10	12	OP-PA0312_00-20S	OP-PA0312_00-40S	OP-PA0312_00-60S	OP-PA0312_00-80S

Introducer Sheath	NP (atm)	RBP (atm)	Balloon ø (mm)	Balloon length (mm)			
				100	120	150	200
5F	6	12	4	OP-PA034_00-100S	OP-PA034_00-120S	OP-PA034_00-150S	OP-PA034_00-200S
	6	12	5	OP-PA035_00-100S	OP-PA035_00-120S	OP-PA035_00-150S	OP-PA035_00-200S
6F	6	12	6	OP-PA036_00-100S	OP-PA036_00-120S	OP-PA036_00-150S	OP-PA036_00-200S
	6	10	7	OP-PA037_00-100S	OP-PA037_00-120S	OP-PA037_00-150S	OP-PA037_00-200S
7F	5	10	8	OP-PA038_00-100S	OP-PA038_00-120S	OP-PA038_00-150S	OP-PA038_00-200S

CATHETER LENGTH 130 CM

Introducer Sheath	NP (atm)	RBP (atm)	Balloon ø (mm)	Balloon length (mm)			
				20	40	60	80
5F	8	14	3	OP-PB033_00-20S	OP-PB033_00-40S	OP-PB033_00-60S	OP-PB033_00-80S
	8	14	4	OP-PB034_00-20S	OP-PB034_00-40S	OP-PB034_00-60S	OP-PB034_00-80S
	8	14	5	OP-PB035_00-20S	OP-PB035_00-40S	OP-PB035_00-60S	OP-PB035_00-80S
	8	14	6	OP-PB036_00-20S	OP-PB036_00-40S	OP-PB036_00-60S	OP-PB036_00-80S
	8	13	7	OP-PB037_00-20S	OP-PB037_00-40S	OP-PB037_00-60S	OP-PB037_00-80S
6F	8	12	8	OP-PB038_00-20S	OP-PB038_00-40S	OP-PB038_00-60S	OP-PB038_00-80S
	8	12	9	OP-PB039_00-20S	OP-PB039_00-40S	OP-PB039_00-60S	OP-PB039_00-80S
7F	6	10	10	OP-PB0310_00-20S	OP-PB0310_00-40S	OP-PB0310_00-60S	OP-PB0310_00-80S
	6	10	12	OP-PB0312_00-20S	OP-PB0312_00-40S	OP-PB0312_00-60S	OP-PB0312_00-80S

Introducer Sheath	NP (atm)	RBP (atm)	Balloon ø (mm)	Balloon length (mm)			
				100	120	150	200
5F	6	12	4	OP-PB034_00-100S	OP-PB034_00-120S	OP-PB034_00-150S	OP-PB034_00-200S
	6	12	5	OP-PB035_00-100S	OP-PB035_00-120S	OP-PB035_00-150S	OP-PB035_00-200S
6F	6	12	6	OP-PB036_00-100S	OP-PB036_00-120S	OP-PB036_00-150S	OP-PB036_00-200S
	6	10	7	OP-PB037_00-100S	OP-PB037_00-120S	OP-PB037_00-150S	OP-PB037_00-200S
7F	5	10	8	OP-PB038_00-100S	OP-PB038_00-120S	OP-PB038_00-150S	OP-PB038_00-200S

CATHETER LENGTH 150 CM

Introducer Sheath	NP (atm)	RBP (atm)	Balloon ø (mm)	Balloon length (mm)			
				20	40	60	80
5F	8	14	3	OP-PC033_00-20S	OP-PC033_00-40S	OP-PC033_00-60S	OP-PC033_00-80S
	8	14	4	OP-PC034_00-20S	OP-PC034_00-40S	OP-PC034_00-60S	OP-PC034_00-80S
	8	14	5	OP-PC035_00-20S	OP-PC035_00-40S	OP-PC035_00-60S	OP-PC035_00-80S
	8	14	6	OP-PC036_00-20S	OP-PC036_00-40S	OP-PC036_00-60S	OP-PC036_00-80S
	8	13	7	OP-PC037_00-20S	OP-PC037_00-40S	OP-PC037_00-60S	OP-PC037_00-80S
6F	8	12	8	OP-PC038_00-20S	OP-PC038_00-40S	OP-PC038_00-60S	OP-PC038_00-80S
	8	12	9	OP-PC039_00-20S	OP-PC039_00-40S	OP-PC039_00-60S	OP-PC039_00-80S
7F	6	10	10	OP-PC0310_00-20S	OP-PC0310_00-40S	OP-PC0310_00-60S	OP-PC0310_00-80S
	6	10	12	OP-PC0312_00-20S	OP-PC0312_00-40S	OP-PC0312_00-60S	OP-PC0312_00-80S

Introducer Sheath	NP (atm)	RBP (atm)	Balloon ø (mm)	Balloon length (mm)			
				100	120	150	200
5F	6	12	4	OP-PC034_00-100S	OP-PC034_00-120S	OP-PC034_00-150S	OP-PC034_00-200S
	6	12	5	OP-PC035_00-100S	OP-PC035_00-120S	OP-PC035_00-150S	OP-PC035_00-200S
6F	6	12	6	OP-PC036_00-100S	OP-PC036_00-120S	OP-PC036_00-150S	OP-PC036_00-200S
	6	10	7	OP-PC037_00-100S	OP-PC037_00-120S	OP-PC037_00-150S	OP-PC037_00-200S
7F	5	10	8	OP-PC038_00-100S	OP-PC038_00-120S	OP-PC038_00-150S	OP-PC038_00-200S

YOUR PATIENT IS THE FOCUS OF OUR EVERYDAY ACTIONS

Optimed, based in Ettlingen (Germany), has been engaged in research, development, manufacturing and worldwide distribution of high-end medical products for minimal invasive therapy since 1996. More than 200 employees in our headquarters, production facilities and our global sales teams ensure every day that we provide you and your patients with the highest quality medical devices.



Visit our website at www.optimed.com to discover our comprehensive portfolio and to view our latest product catalogue.



Order Code 9997-0023EN
Rev (08/2024) | ©optimed

Distributed by:
optimed Medizinische Instrumente GmbH
Ferdinand-Porsche-Straße 11 | 76275 Ettlingen Germany
Tel. +49 (0) 7243 / 76 33-0 | Fax +49 (0) 7243 / 76 33-624
info@optimed.com | www.optimed.com

Manufactured by:
NATEC Medical Ltd
Maeva Centre Building | Silicon Avenue,
Ebene Business Park | Reduit 72201 | Mauritius
www.natec-medical.com

CE 1434